

These motion cards work well for a lesson on Creation or Noah's Ark.

You can play with them like Red Light/ Green Light. The person at the front holds up a card and kids move in that style to get to the front. When there is no card up, the players stand frozen in place.

They can also be fun with a homemade obstacle course made of hula hoops to jump through, pool noodles to step over, chairs to climb under, or whatever else you have on hand. Kids move in the style of the card through the "obstacles."

Kids can also pretend they are various animals getting on the ark that Noah built. They can move to the ark two by two.

Finally, the cards can be used with a "Follow the Leader" style game where the person at the front of the line moves in various ways around the room and the rest of the group follows them in the line.



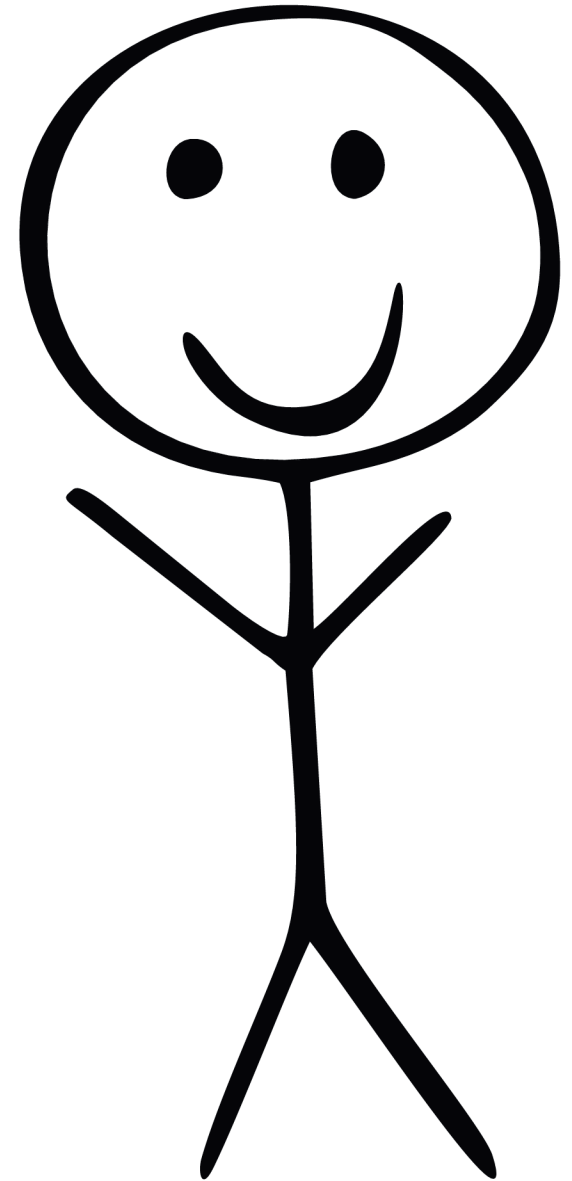
grace & joy

MINISTRY TOOLS
WWW.GRACEANDJOYKIDS.COM

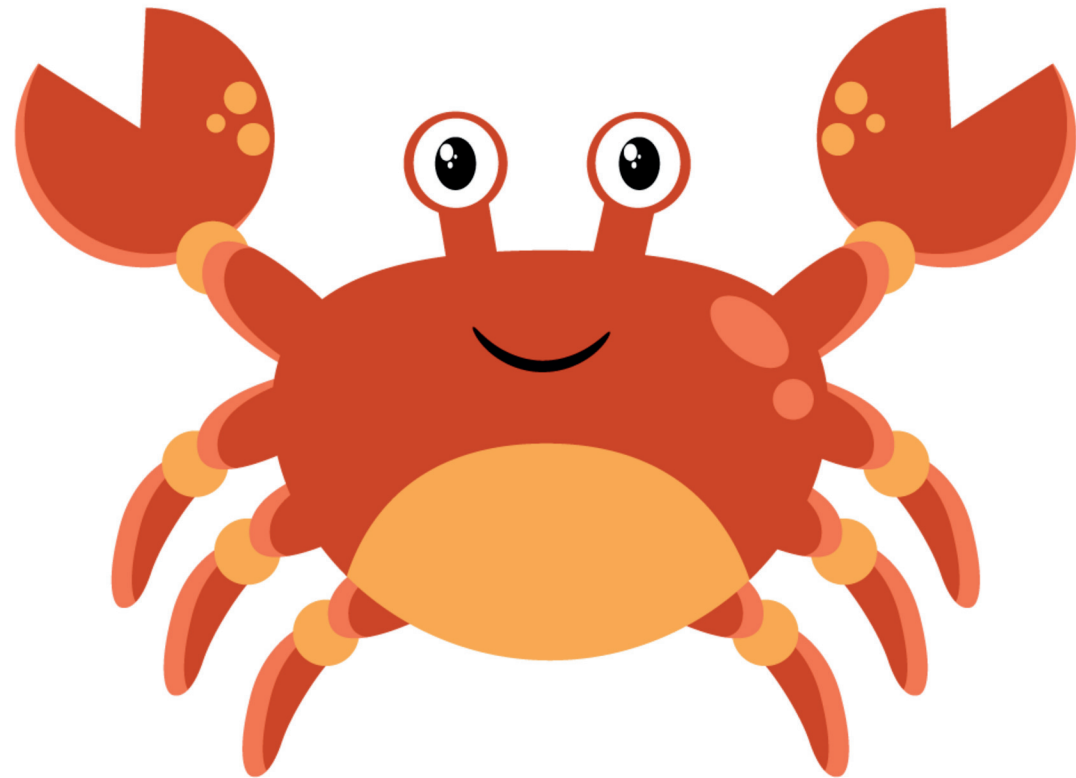


God made
YOU!

How do
you move?



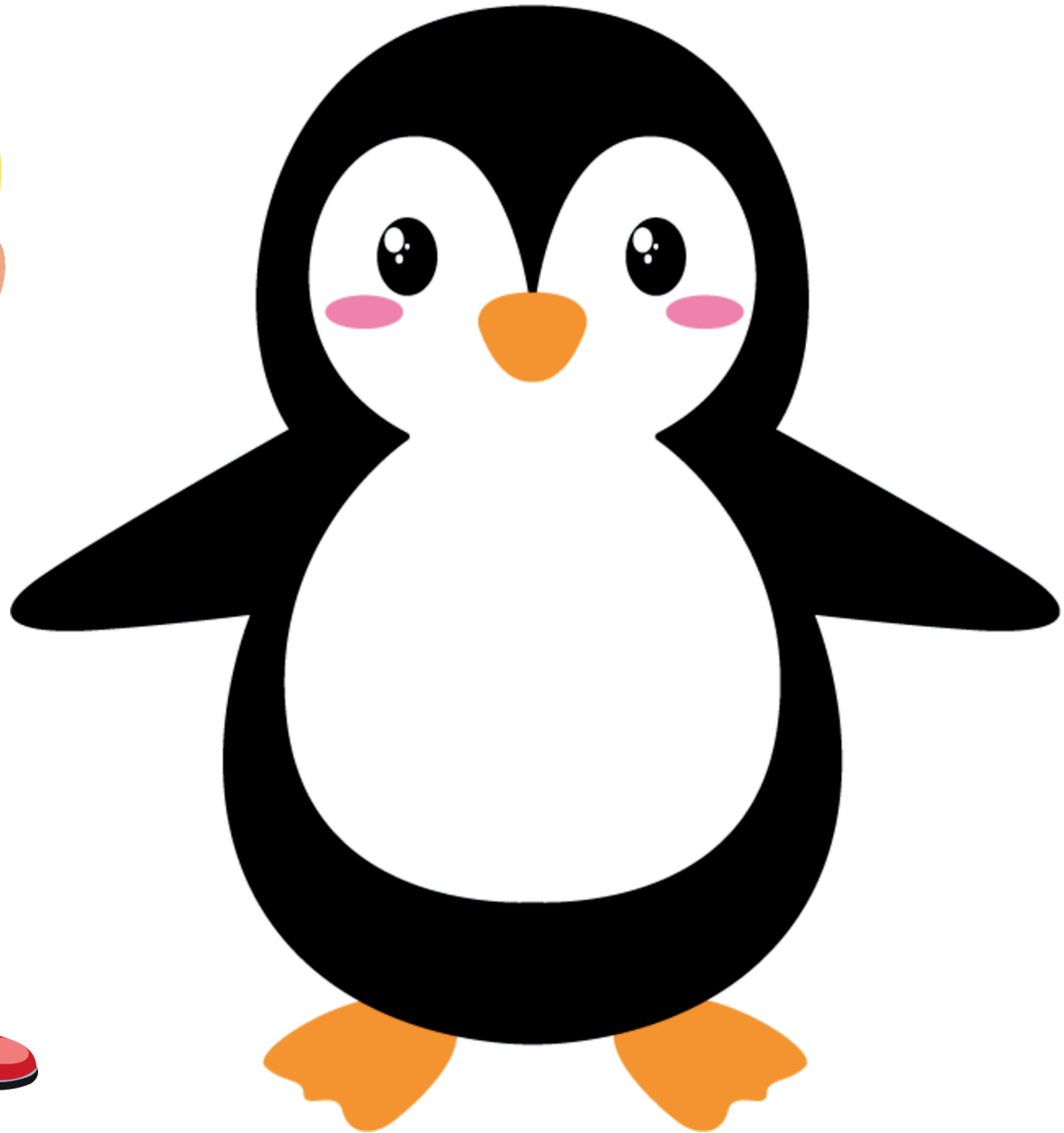
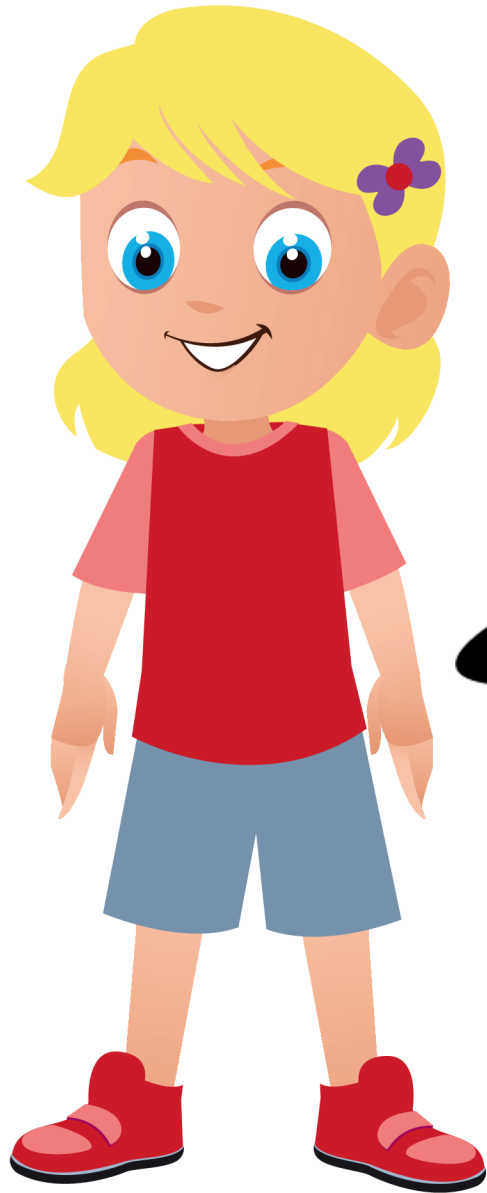
walk sideways like a crab



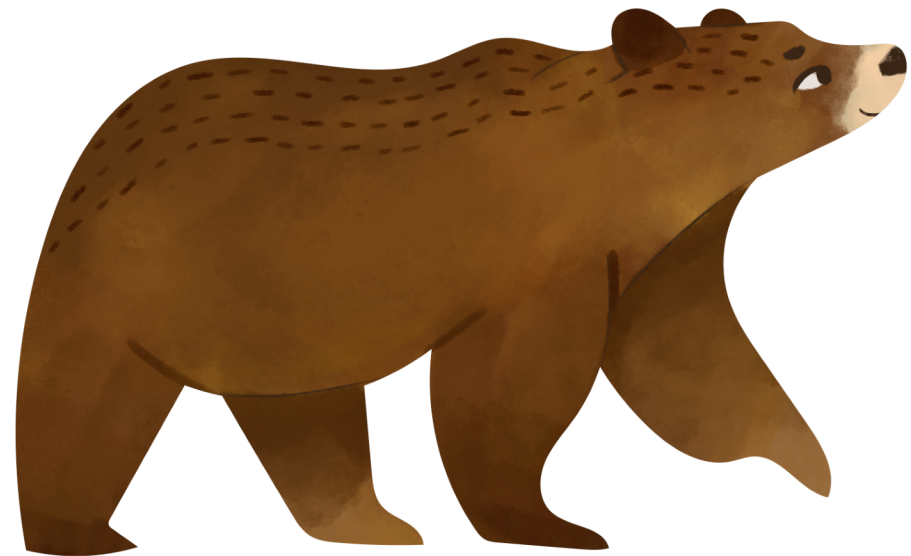
stand on one foot
like a flamingo



waddle like a penguin



crawl on your
hands and feet
like a bear



stretch up tall like a
giraffe



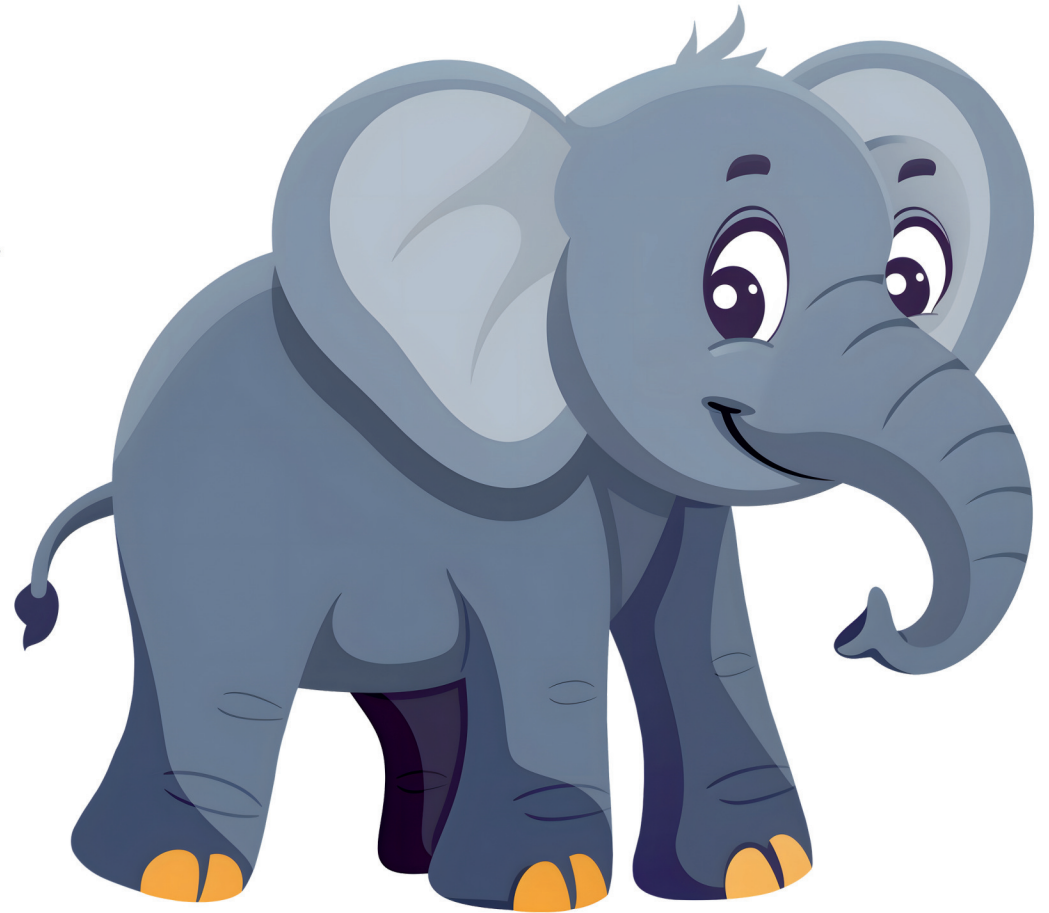
put out your claws and
growl like a lion



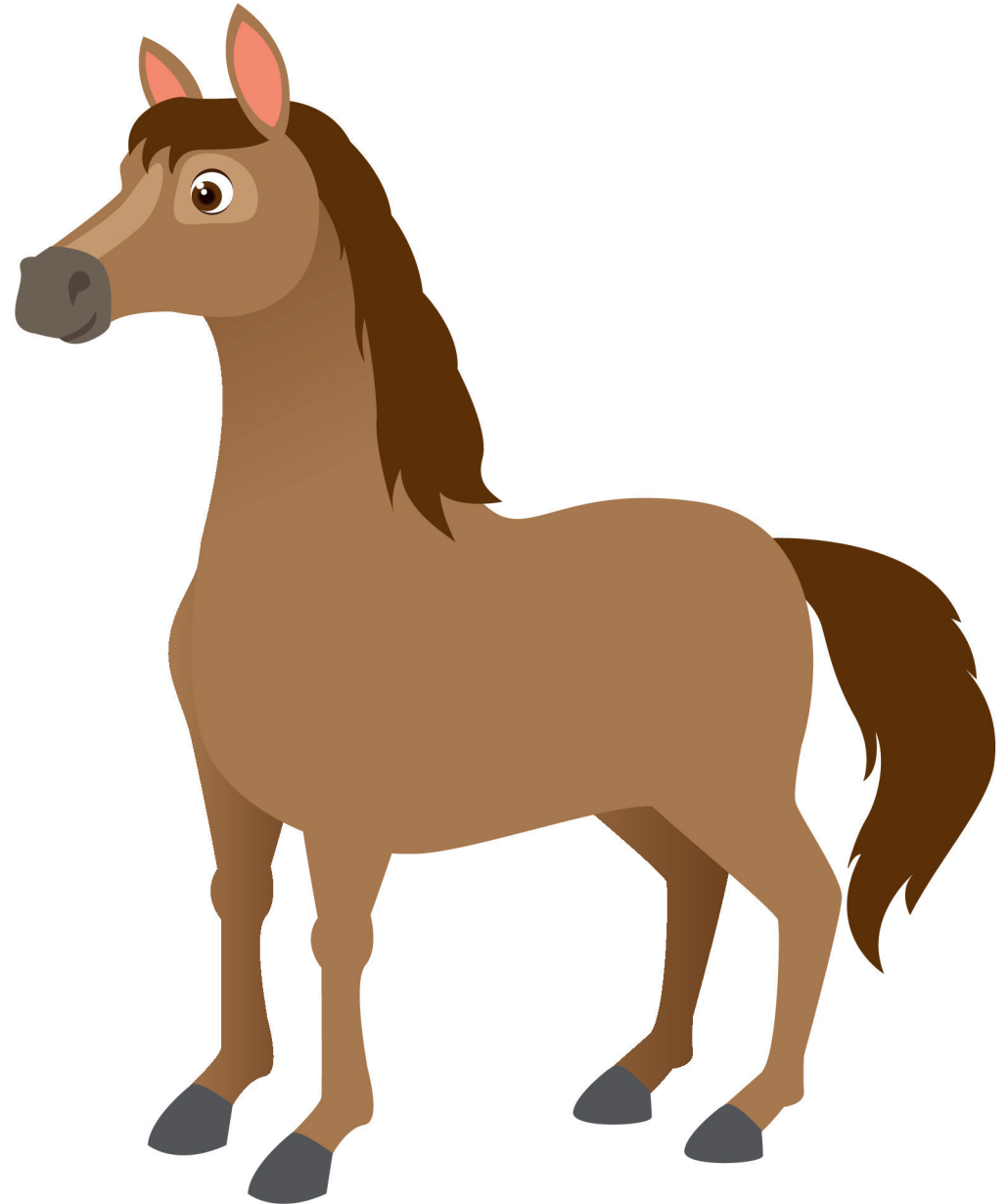
hop like a frog



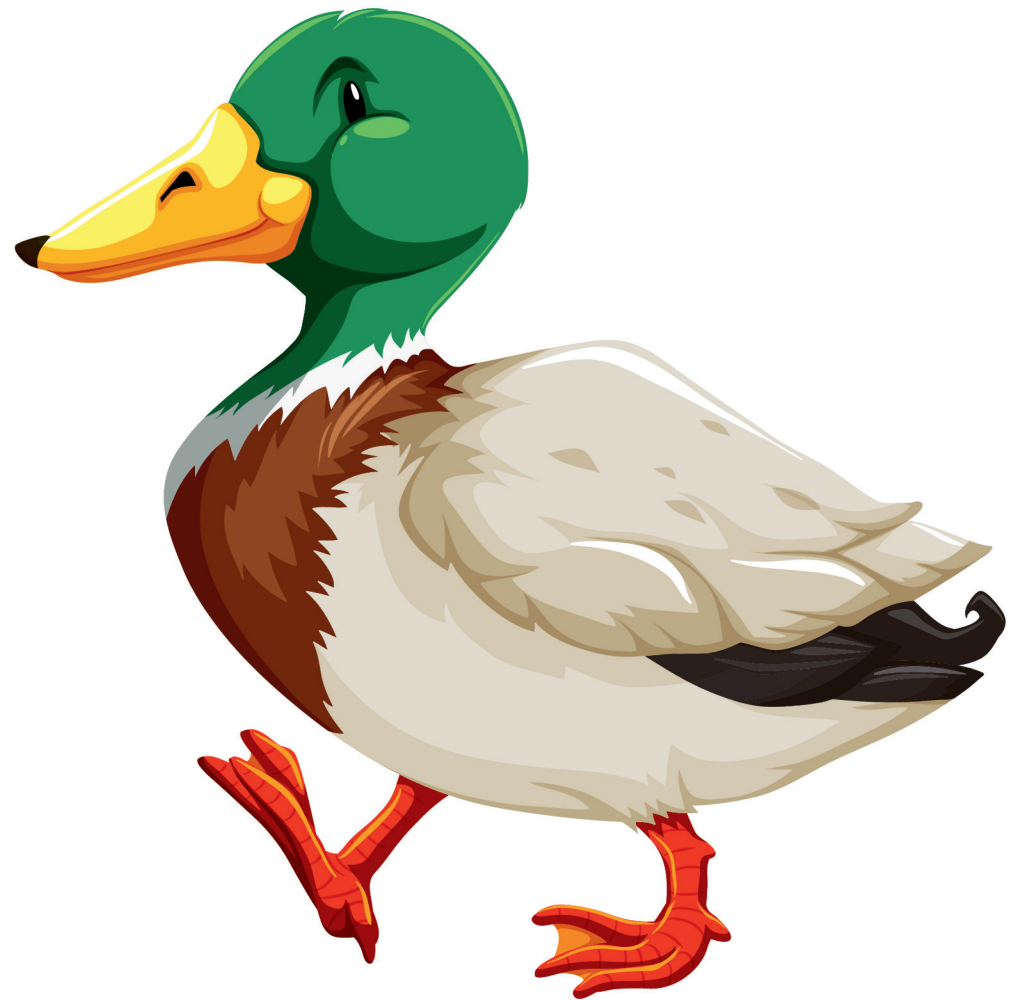
swing your arms like an
elephant trunk



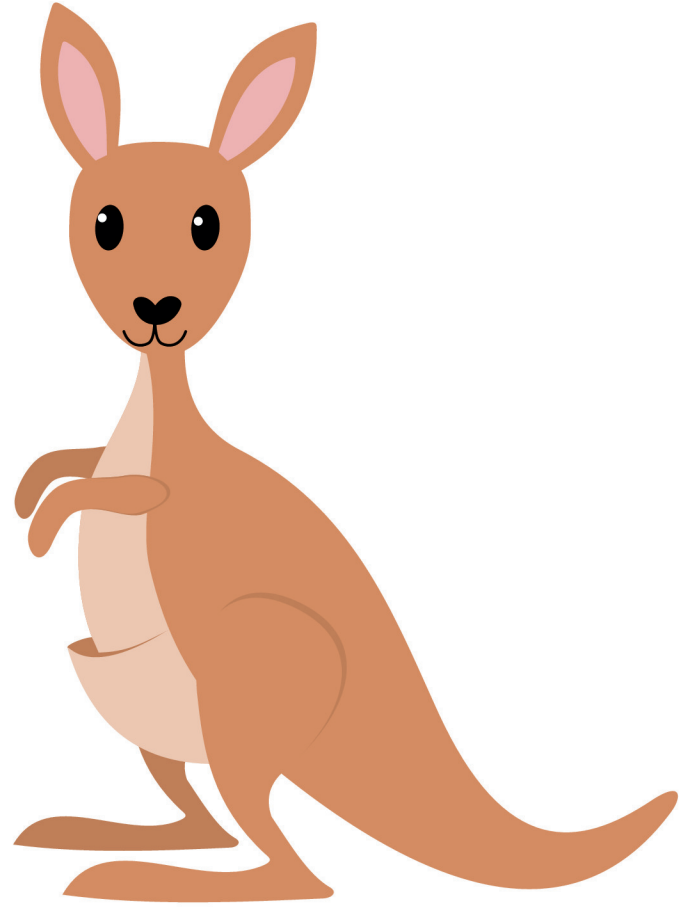
gallop like a horse



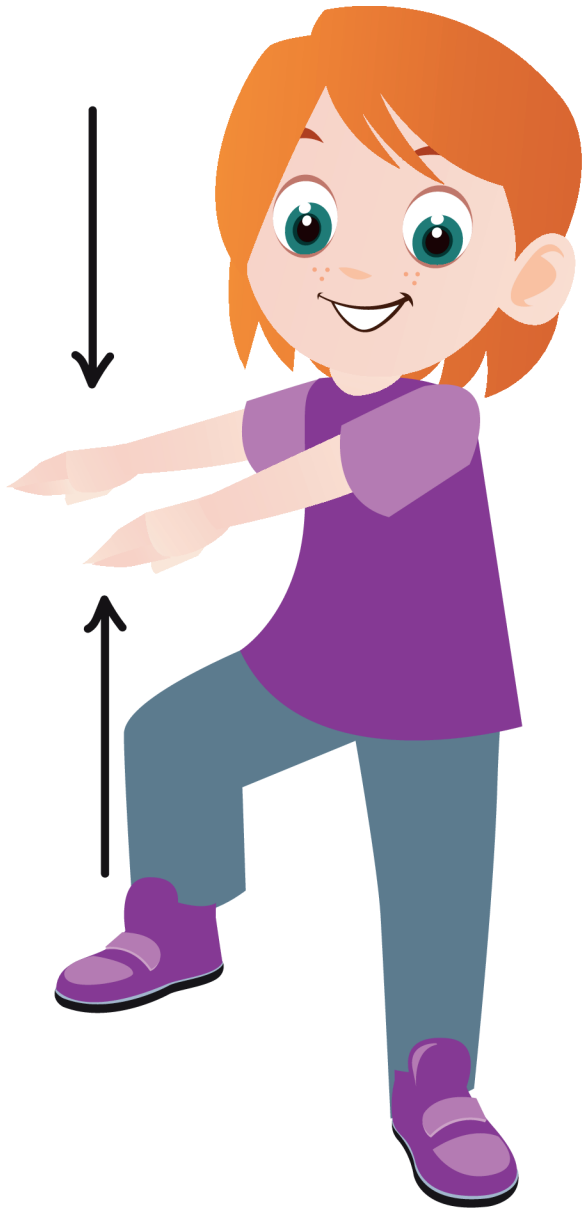
waddle like a duck
and flap your wings



jump like a kangaroo



snap like an
alligator



fly like a toucan

